

Encoder and Push Operation Type SRBE Series

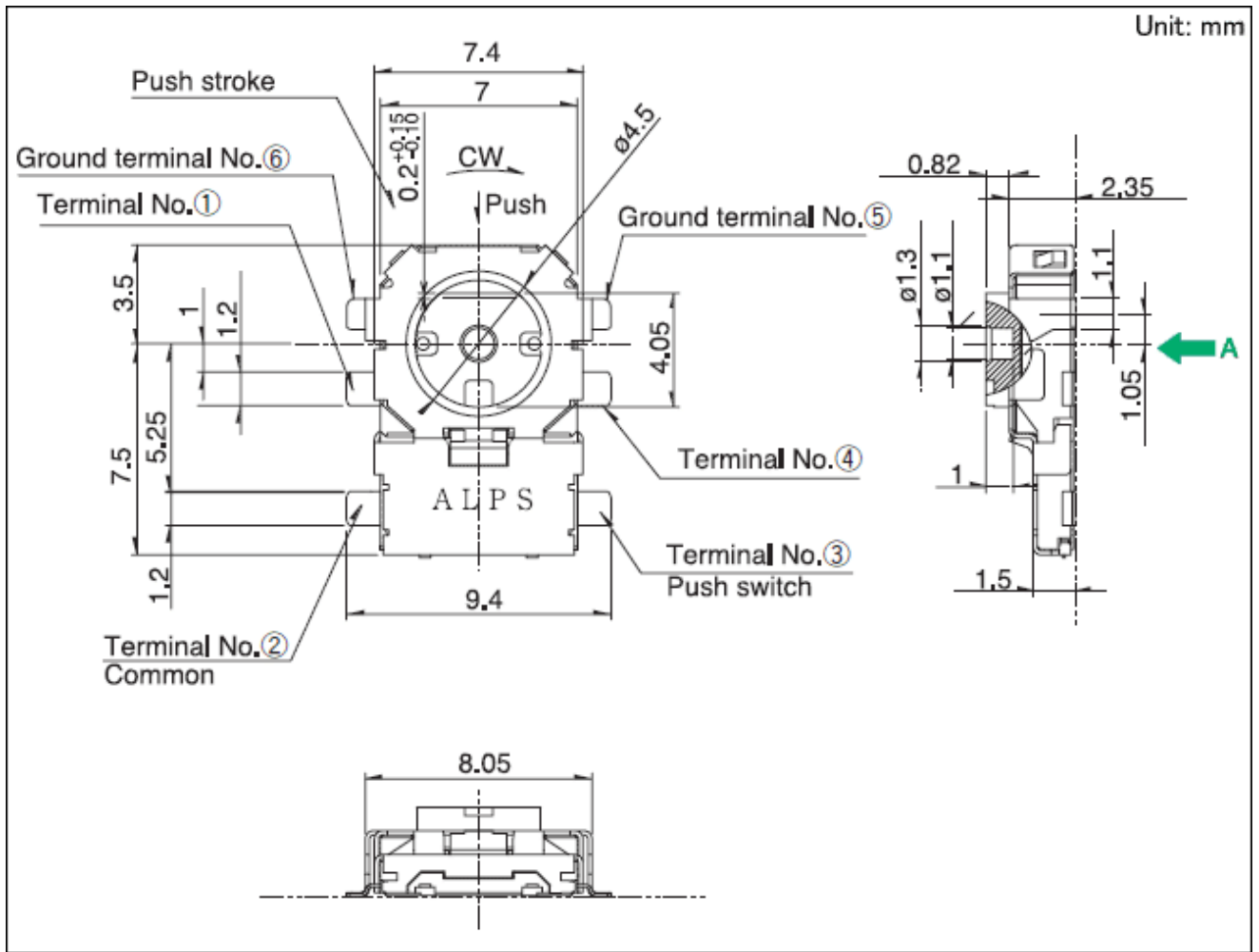
Number of operating shafts		Single-shaft
Shaft material		Resin
Number of detent		12
Number of pulse		6
Operating direction		Horizontal
Mounting method		Standard
Travel (Push operation)		0.2mm
Operating temperature range		-10°C to +60°C
Ratings (max.)/(min.) (Resistive load)		1mA 5V DC/50μA 3V DC
Electrical performance	Output voltage	1V max. at 1mA 5V DC (Resistive load)
Insulation resistance		10MΩ min. 50V DC
Voltage proof		50V AC for 1 minute
Mechanical performance	Push operating force	3.5±1.5N
	Encoders detent torque	3±2mN·m
	Actuator strength	Push/pull directions 50N
Durability	Operating life	Center push 100,000 cycles
		Encoder 100,000 cycles
Environmental performance	Cold	-30±2°C for 96h
	Dry heat	85±2°C for 96h
	Damp heat	40±2°C, 90 to 95%RH for 96h
Minimum order unit (pcs.)	Japan	1,500
	Export	6,000

Dimensions

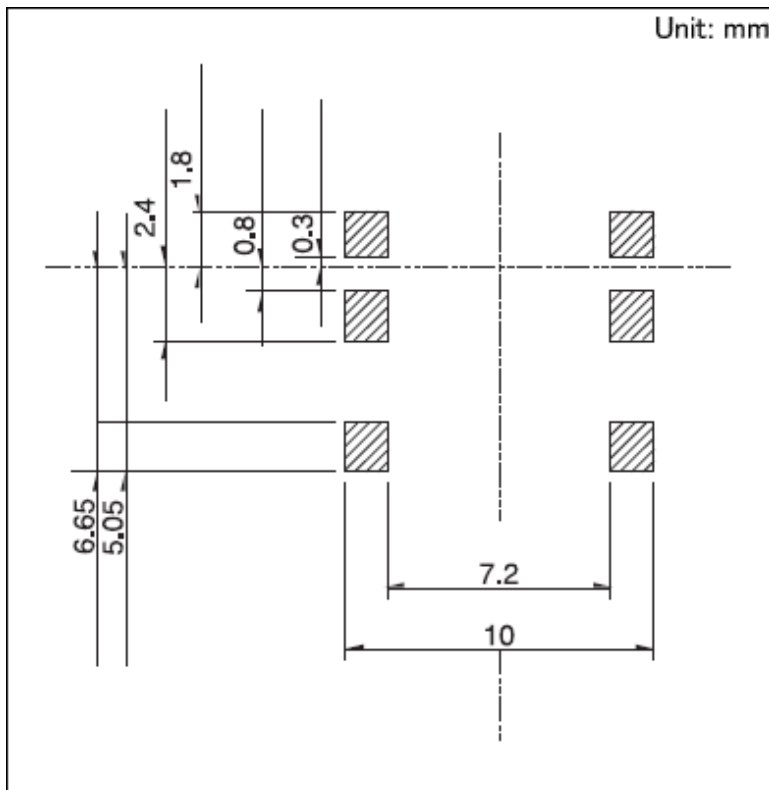
About Cookies on this site:

This site uses cookies to improve your online experience. By continuing to use this site without changing your cookie preferences, we will assume that you are agreeing to our use of cookies. For more information, visit our [Terms of Use](#).

Accept



Land Dimensions

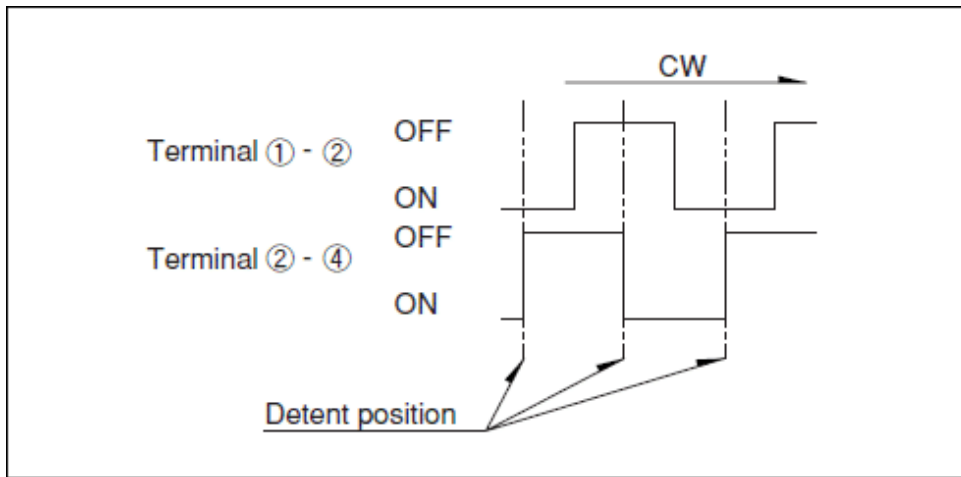


Viewed from direction A in the dimensions.

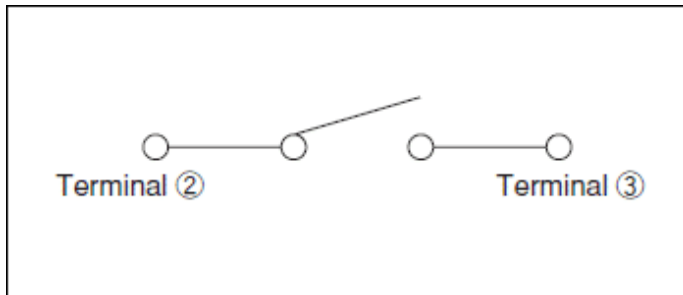
Output Signal

About Cookies on this site:
This site uses cookies to improve your online experience. By continuing to use this site without changing your cookie preferences, we will assume that you are agreeing to our use of cookies. For more information, visit our [Terms of Use](#).

Accept

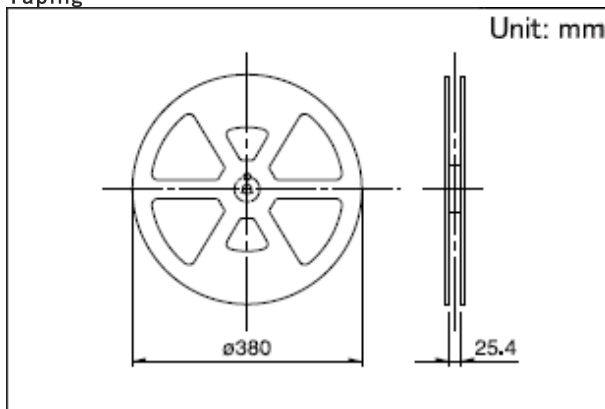


Circuit Diagram



Packing Specifications

Taping



Number of packages (pcs.)	1 reel	1,500
	1 case / Japan	3,000
	1 case / export packing	6,000
Tape width (mm)	24	
Export package measurements (mm)	428 × 413 × 172	

Soldering Condition

Example of Reflow Soldering Condition

1. Heating method:

Double heating method with infrared heater.

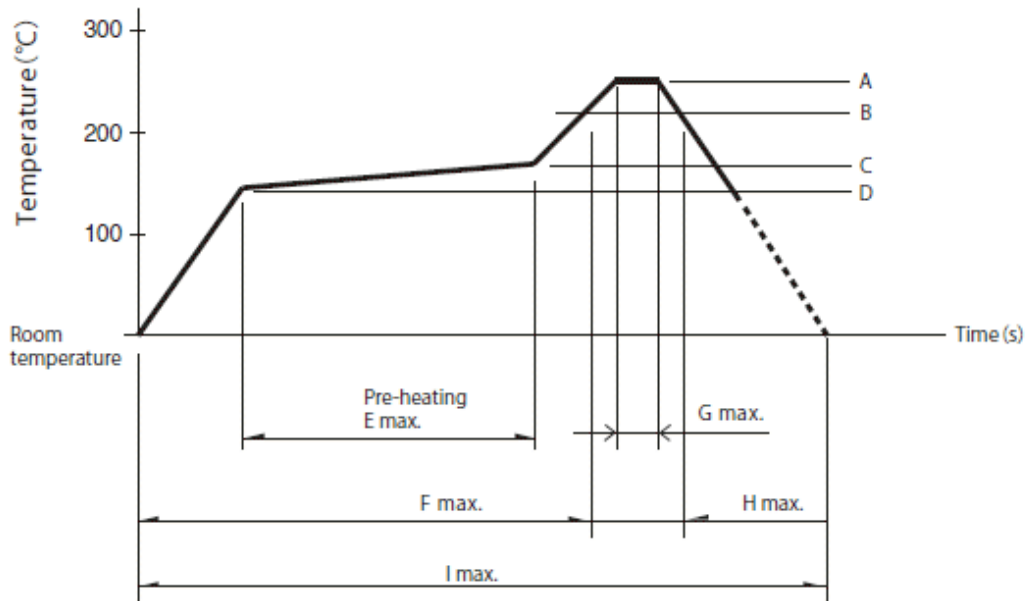
2. Temperature measurement:

Thermocouple 0.1 to 0.2 Φ CA (K) or CC (T) at solder joints (copper foil surface). A heat resisting tape should be used to fix thermocouple

About Cookies on this site:

This site uses cookies to improve your online experience. By continuing to use this site without changing your cookie preferences, we will assume that you are agreeing to our use of cookies. For more information, visit our [Terms of Use](#).

Accept



A	B	C	D	E	F	G	H	I	No. of reflows
260°C	230°C	180°C	150°C	2 min.	-	-	40s	-	1 time

(1) The condition mentioned above is the temperature on the mounting surface of a PC board. There are cases where the PC board's temperature greatly differs from that of the switch, depending on the PC board's material, size, thickness, etc. The above-stated conditions shall also apply to switch surface temperatures.

(2) Soldering conditions differ depending on reflow soldering machines. Prior verification of soldering condition is highly recommended.

Reference for Hand Soldering

Tip temperature	350±5°C
Soldering time	3s max.
No. of solders	1 time

Notes are common to this series/models.

1. This site catalog shows only outline specifications. When using the products, please obtain formal specifications for supply.
2. Please place purchase orders for taping products per minimum order unit (1 reel or a case).

About Cookies on this site:

This site uses cookies to improve your online experience. By continuing to use this site without changing your cookie preferences, we will assume that you are agreeing to our use of cookies. For more information, visit our [Terms of Use](#).

Accept