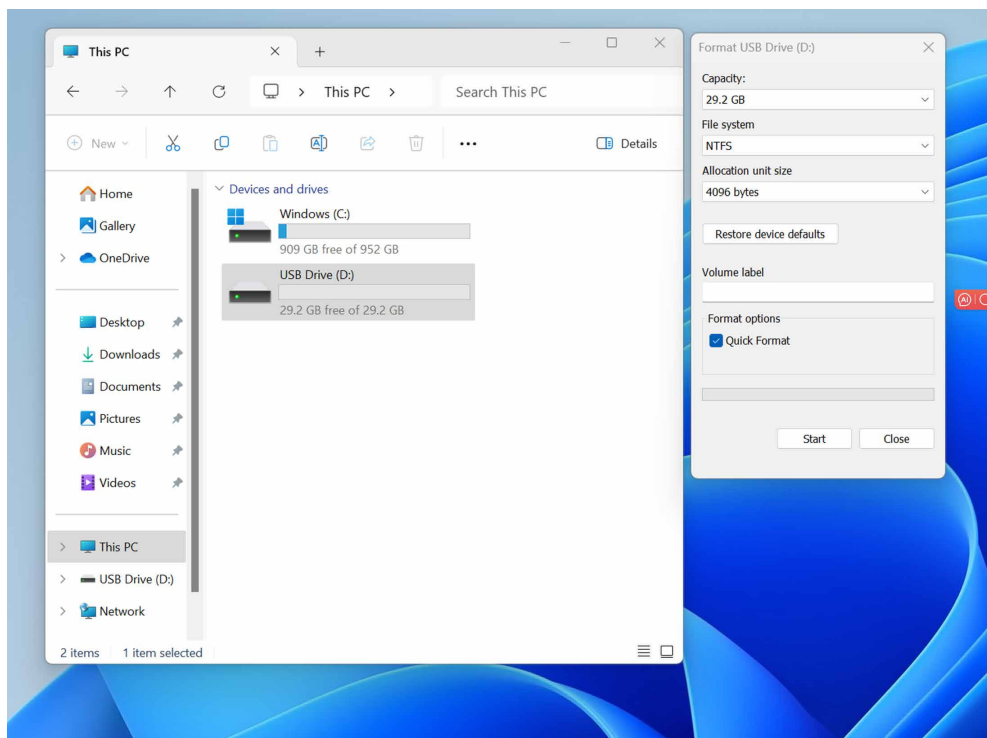


# How to Install an Operating System on a USB Drive

## Step 1:

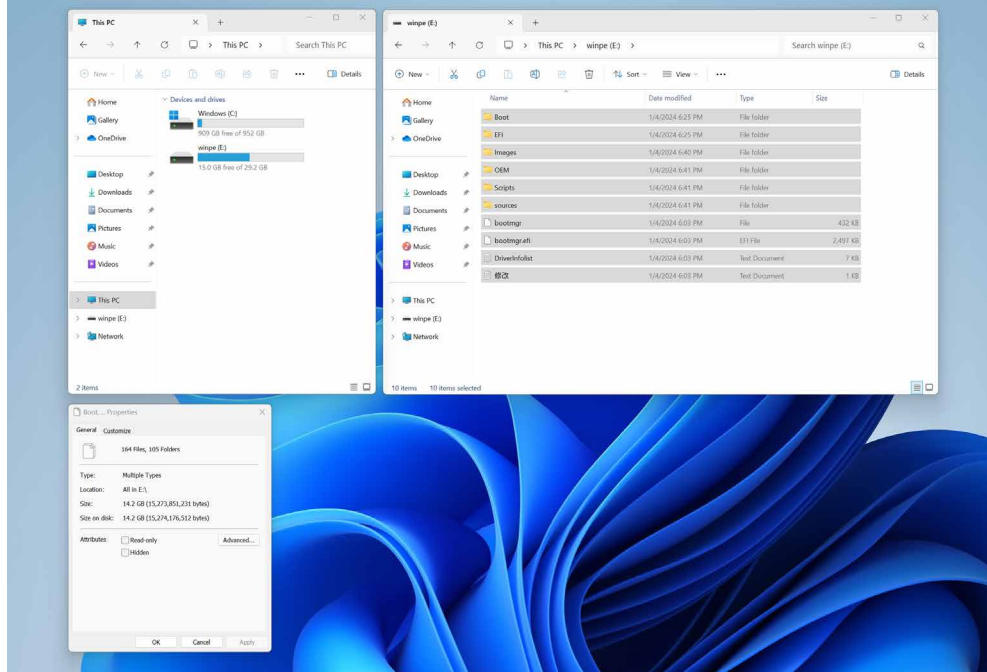
1. Prepare a USB drive with at least 16GB of space, and format the USB drive.
2. Format the USB drive to NTFS and set the volume label to WINPE.



## Step 2:

1. After formatting, paste the system files to the USB drive.

Note: please ensure that all the required files are copied accurately without any missing files and the byte size of the system files matches the size of the local files.



## Step 3:

1. Restart your computer and press F7.
2. Select the USB drive in the boot menu and press Enter key to boot the system from the USB drive.

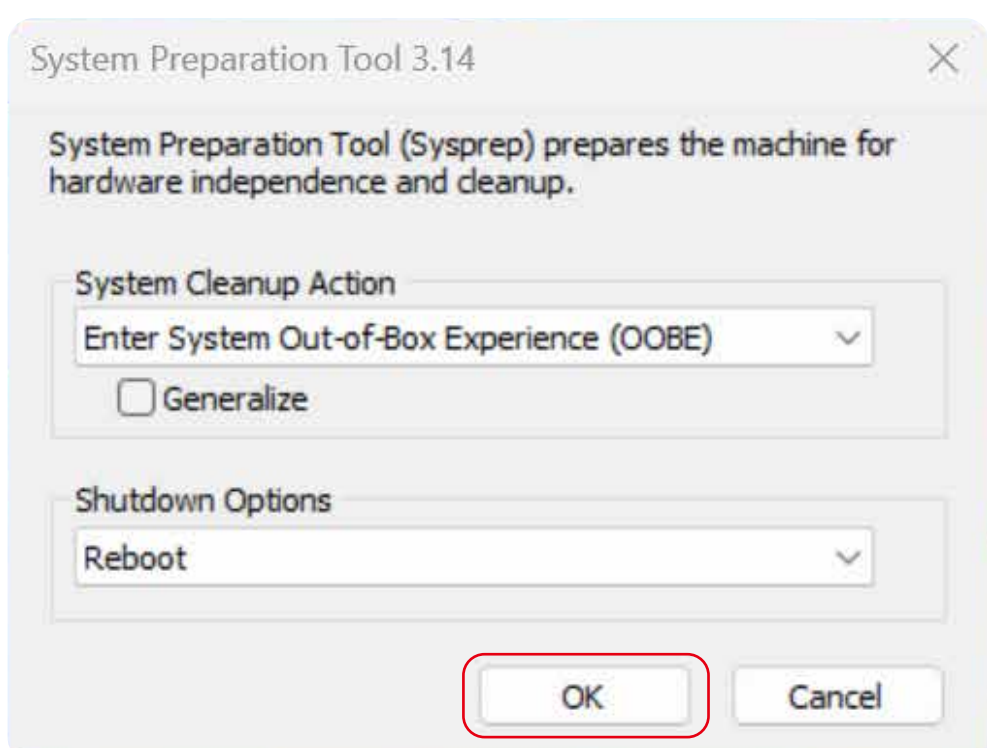


## Step 4:

1. Wait for the installation to complete. This process takes approximately 20 minutes.

## Step 5:

1. After the installation is complete, the home screen will be in factory mode. Click "OK" on the pop-up window to initiate an automatic restart.
2. Upon restarting, you will be taken to OOBIE interface where you can set up your computer's language, region, and other settings until you shift to the user mode.



Now you have completed the installation of operating system.